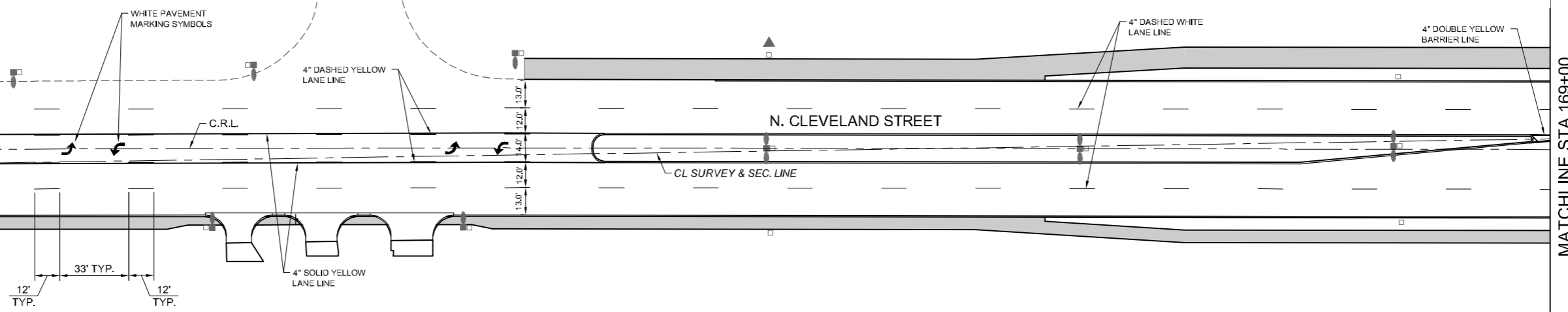


SEC. 11, T22N, R17W



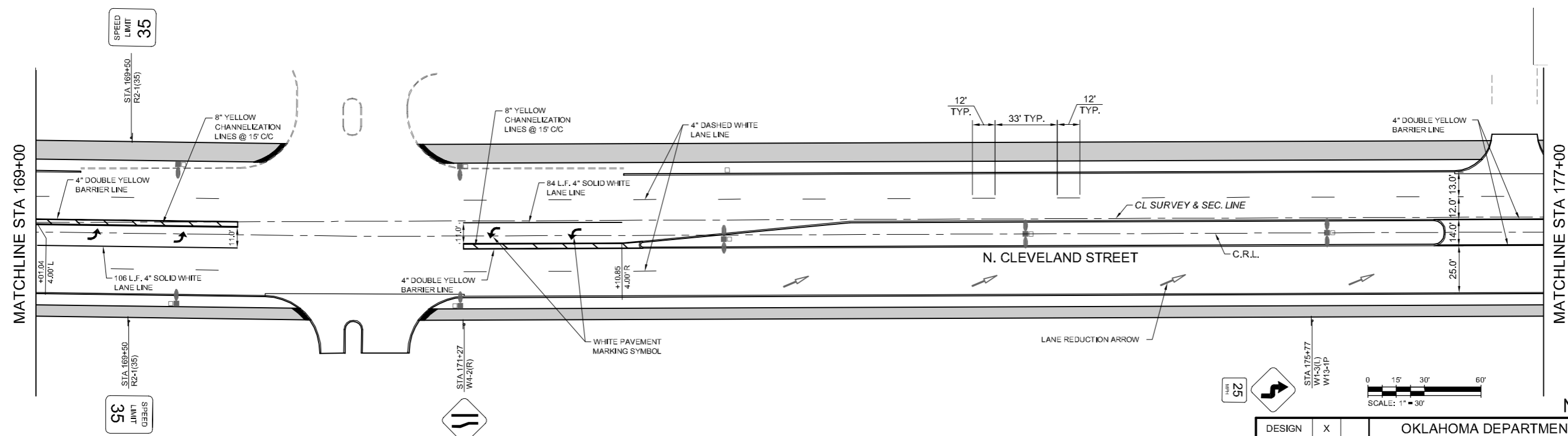
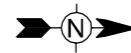
OKLAHOMA DEPARTMENT OF TRANSPORTATION					
FED. ROAD DIST. NO.	STATE	STATE JOB NO.	FISCAL YEAR	SHEET NO.	TOTAL SHEETS
4	OKLA	17020(07)		31	
DESCRIPTION			REVISIONS	DATE	

STA. 161+30.00  
BEGIN PROJECT



MATCHLINE STA 169+00

SEC. 11, T22N, R17W  
SEC. 12, T22N, R17W



MATCHLINE STA 169+00

MATCHLINE STA 177+00

N. CLEVELAND STREET

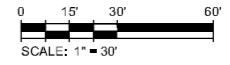
SEC. 12, T22N, R17W

SPEED LIMIT 35

SPEED LIMIT 35



25



DESIGN	X
DRAWN	CWT
CHECKED	JDH
APPROVED	JDH
SQUAD	Tt

OKLAHOMA DEPARTMENT OF TRANSPORTATION

**SIGNING AND STRIPING PLAN**  
STA. 161+30 TO STA. 177+00

STATE JOB NO. 17020(07) SHEET NO. 31

CITY PROJECT R-1311B GARFIELD COUNTY

4/18/2017 2:24:15 PM - P:\2771\21\131-2771\2-1300\1\CAD\SHR\TELESCLEVE BLVD PLANS\SIGNSTRIP PLAN.DWG - SCHUMACHER, MIKE